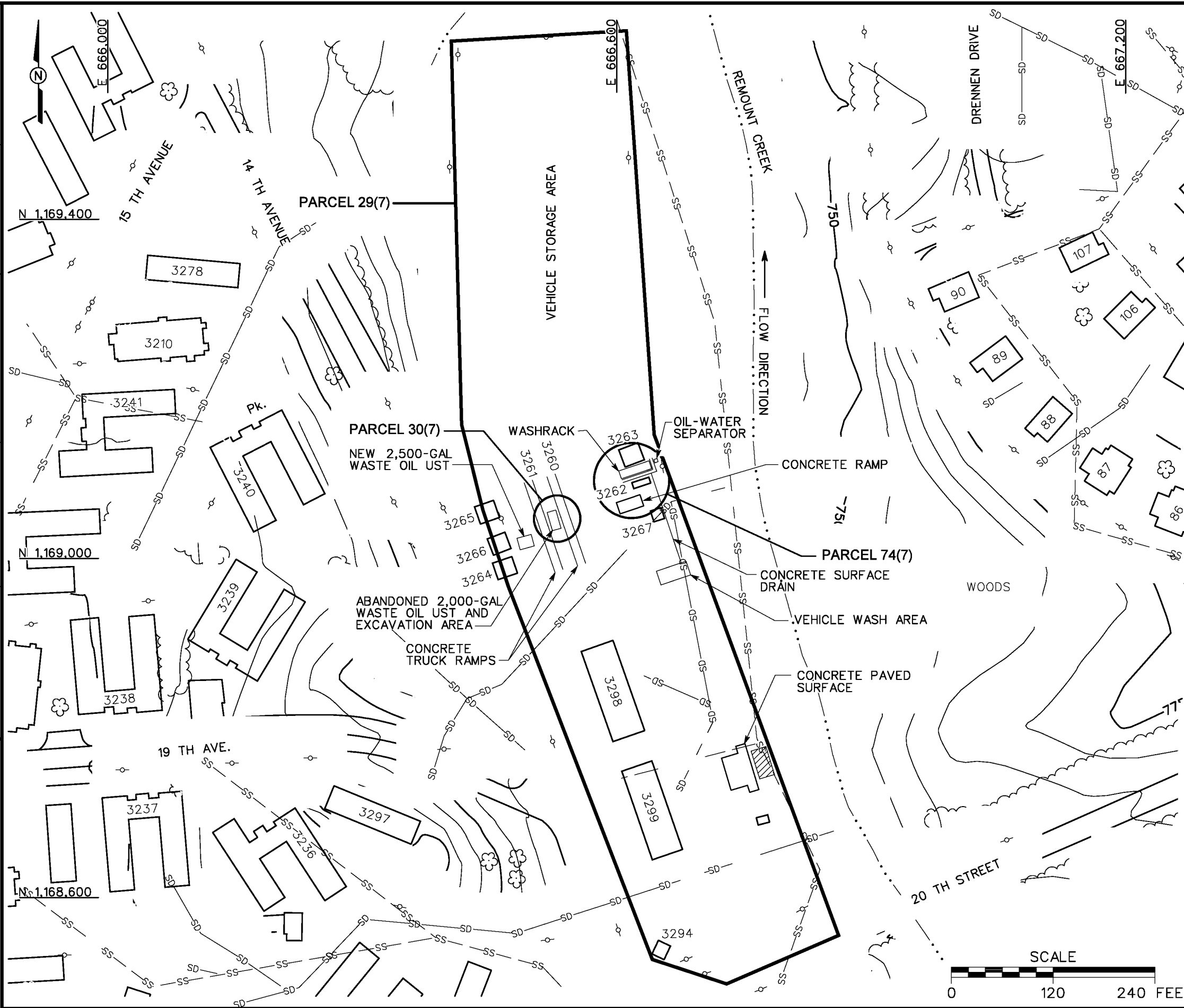


DBILLING
c:\cadd\design\view\774645es.359
06/09/00 02:08:53
STARTING DATE: 09/01/99 DATE LAST REV.:
DRAWN BY: D. BILLINGSLEY
DRAFT, CHK, BY: ENGR, CHK, BY: J. JENKINS
INITIATOR: J. JENKINS
PROJ. MGR.: J. YACOB
DWG. NO.: ... 774645es.359
PROJ. NO.: 774645



- LEGEND**
- UNIMPROVED ROADS AND PARKING
 - PAVED ROADS AND PARKING
 - BUILDING
 - TOPOGRAPHIC CONTOURS (CONTOUR INTERVAL - 5 FOOT)
 - TREES / TREELINE
 - PARCEL BOUNDARY
 - SURFACE DRAINAGE / CREEK
 - FENCE
 - UTILITY POLE
 - SANITARY SEWER LINE
 - STORM DRAINAGE LINE
 - EXCAVATED UST AREA

FIGURE 1-2
SITE MAP
11th CHEMICAL MOTOR POOL AREA
PARCELS 29(7), 30(7), AND 74(7)

U. S. ARMY CORPS OF ENGINEERS
MOBILE DISTRICT
FORT McCLELLAN
CALHOUN COUNTY, ALABAMA
Contract No. DACA21-96-D-0018

IT CORPORATION
A Member of The IT Group

